

**Audio Classics, Ltd  
3501 Vestal Road  
Vestal, N.Y. 13850  
607-766-3501**

# **McIntosh MC1201 LED Installation instructions**

Tools needed :  
Soft cloth or carpet  
#2 Philip's screwdriver  
1\4 inch nut driver

Kit includes:  
1 - meter board LED assembly's  
2 - L board LED assembly's  
2 – colored films (1 green, 1 blue)

Disconnect the AC Power mains before performing any service to the amplifier.

## Step 1 - Meter Illumination

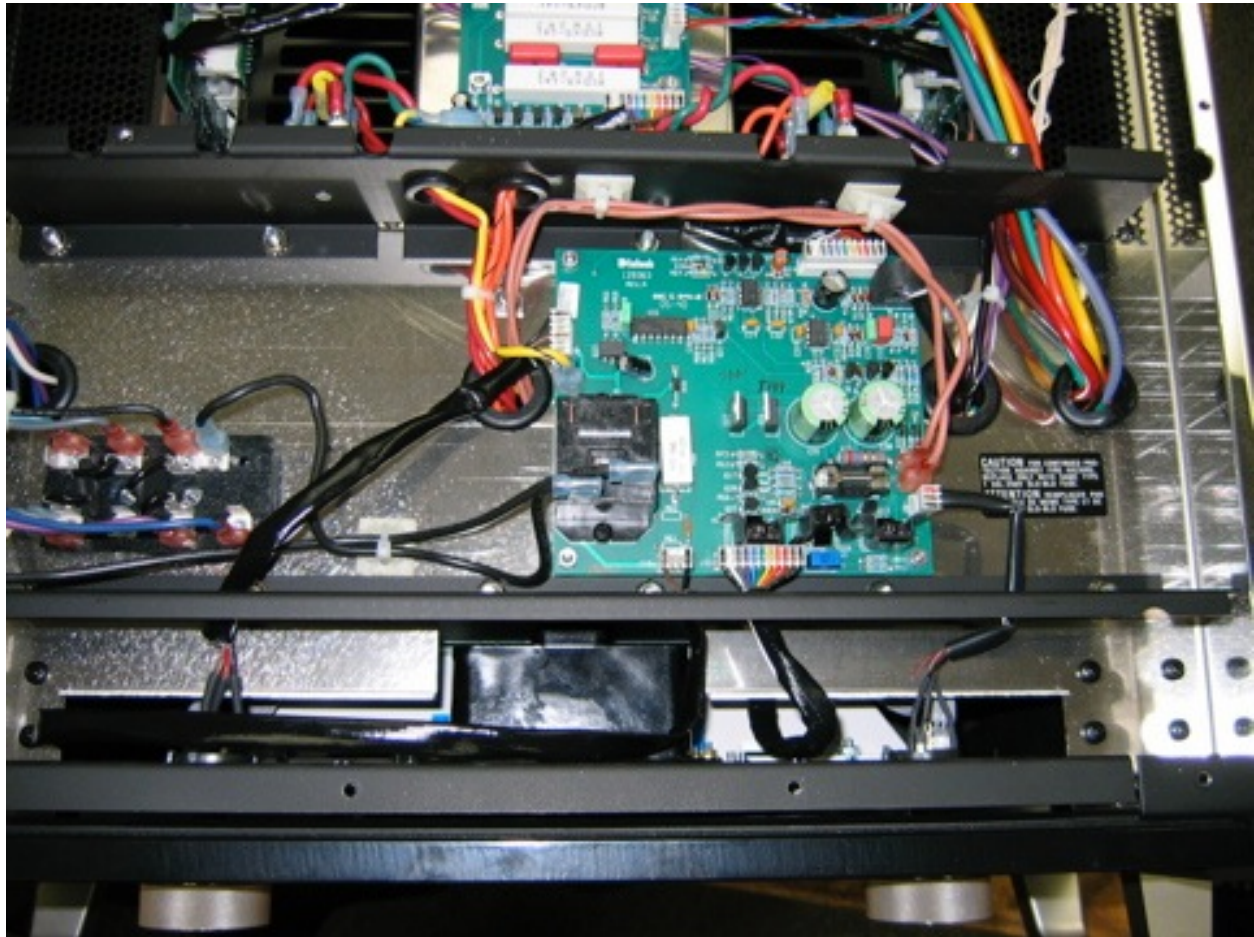
Turn amplifier upside down (on soft cloth) to expose the bottom cover. It is best to have the amplifier weight supported on the transformer cans so the panel is without constant pressure. This will make the job much easier.

Remove all philip's screws (excluding feet) that attach the bottom cover to the amplifier chassis. **Photo0**



Remove the bottom cover, disconnect the 4 wire looms from the front panel that attach to the PC board just behind the black frame rail. These wire looms have small one way connectors in white.

### Photo1



Now you can remove the front panel by removing the bottom (now nearest you) philip's screw on each side.

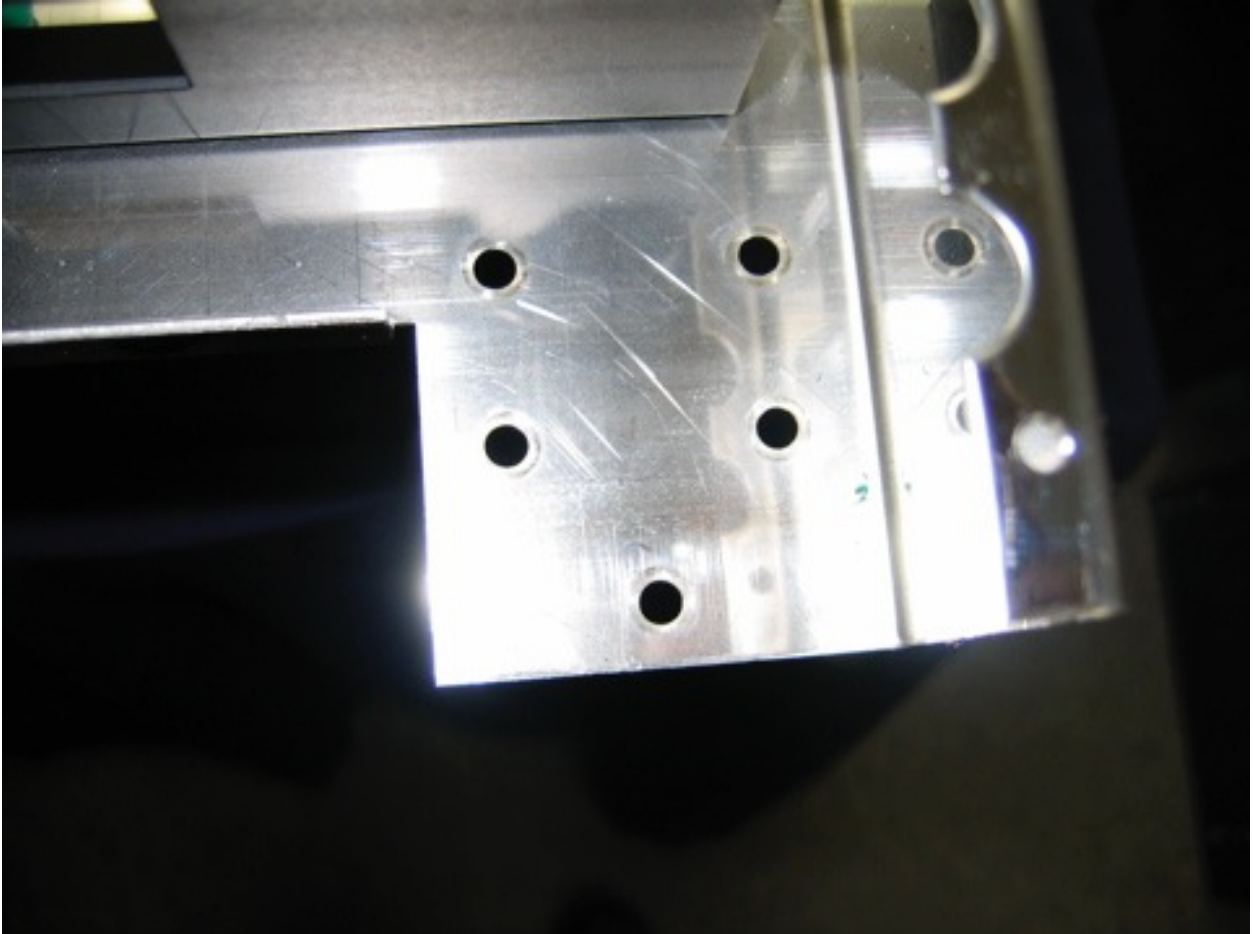
**Photo2**



Then remove the 5 (on each side) black philip's screws that connect the panel assembly to the stainless chassis.



**Photo3**



With the 4 wire harnesses and 12 screws removed you can pull the front panel away from the amp.

Set the panel face down (knobs removed) on a soft surface.  
Remove the remainder 6 screws that hold the black meter dust shroud in place and carefully pull it away from the panel.

Photo4



**Photo5**



Looking at the rear of the panel disconnect the 3 gray wire ribbons

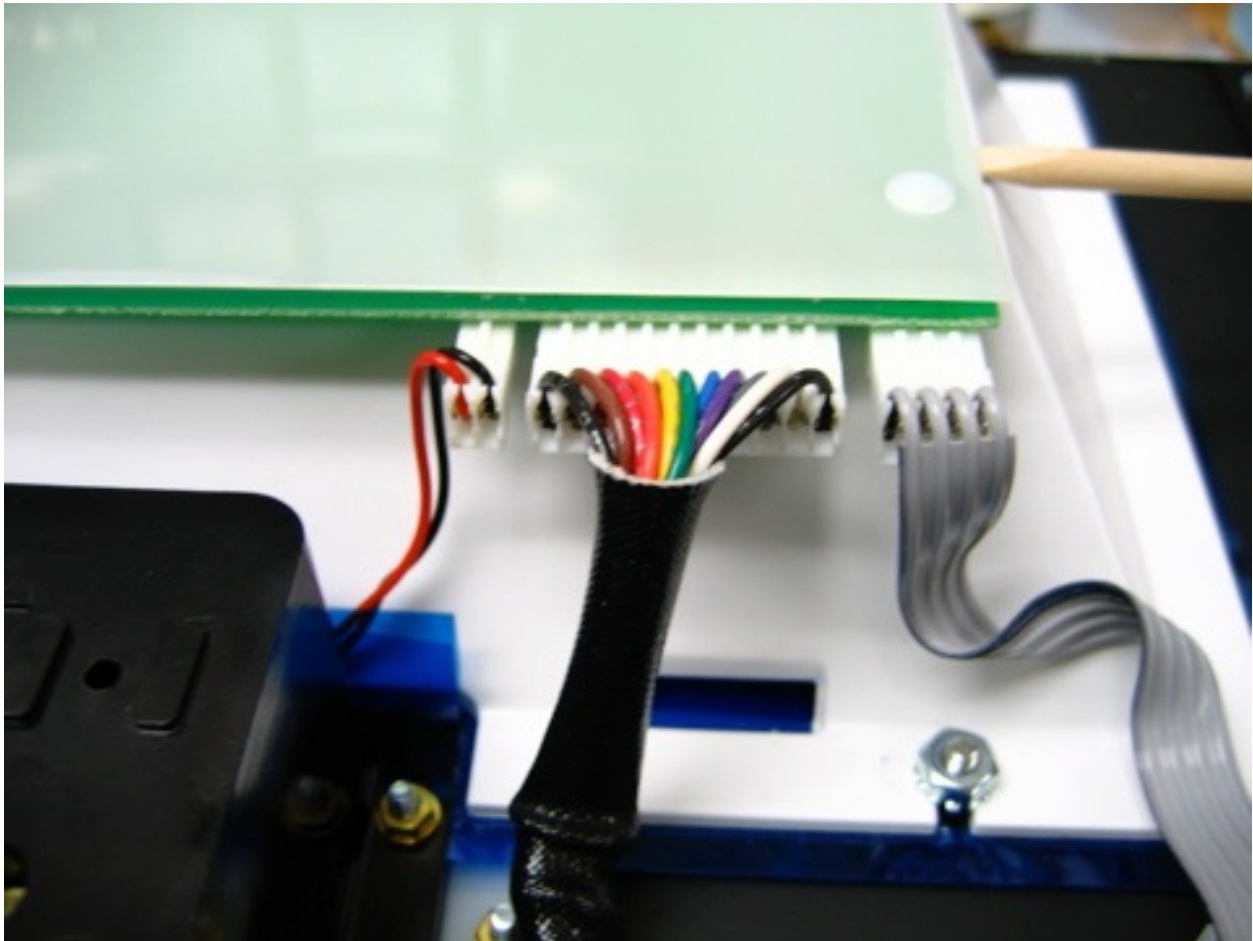
## Photo6



along with the 2 colored connectors (one large & one small).



**Photo7**



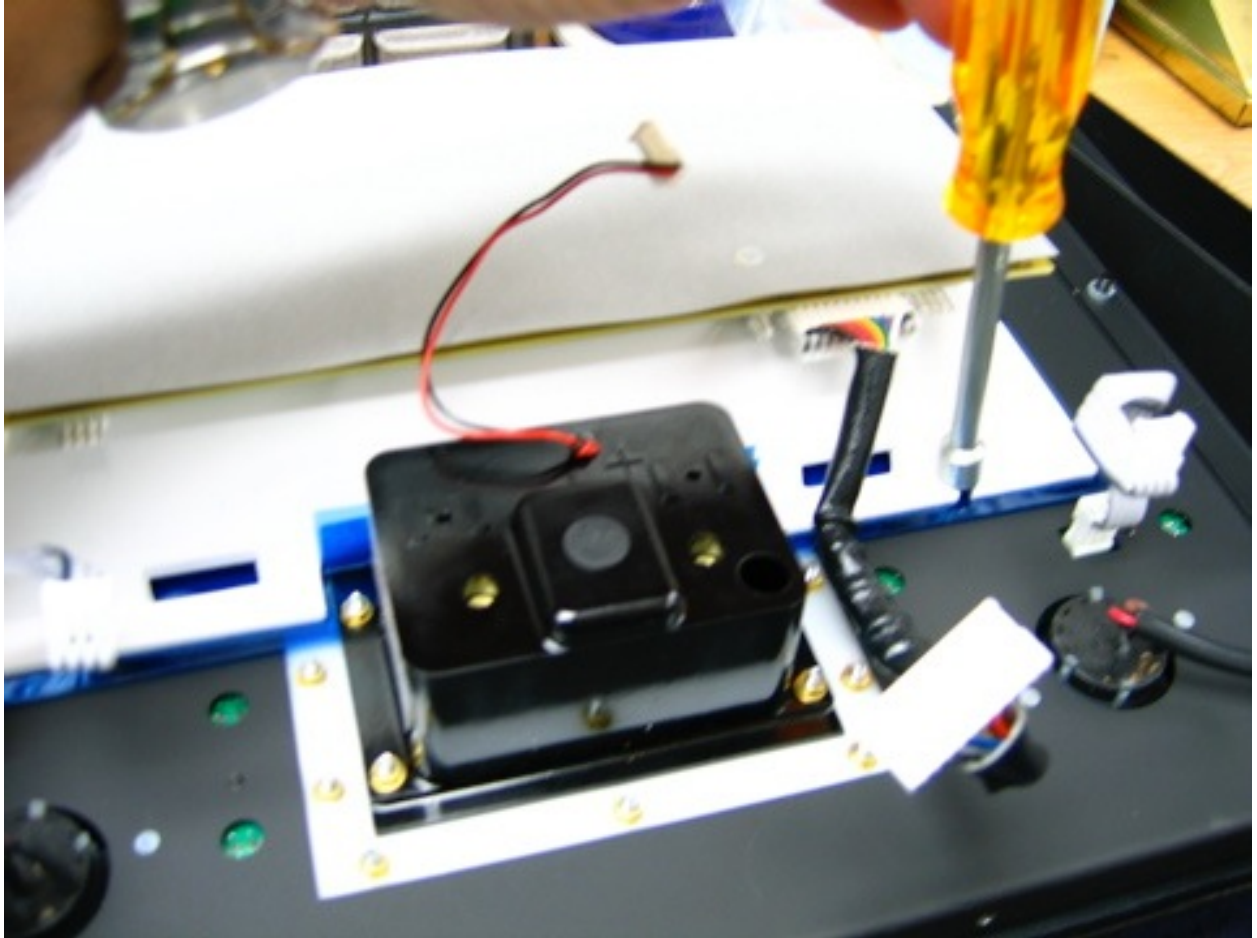
Now you can pull the green light board & its paper protector away from the back of the meter housing. This is held in place by plastic friction fasteners similar to automobile door panels.

## Photo8

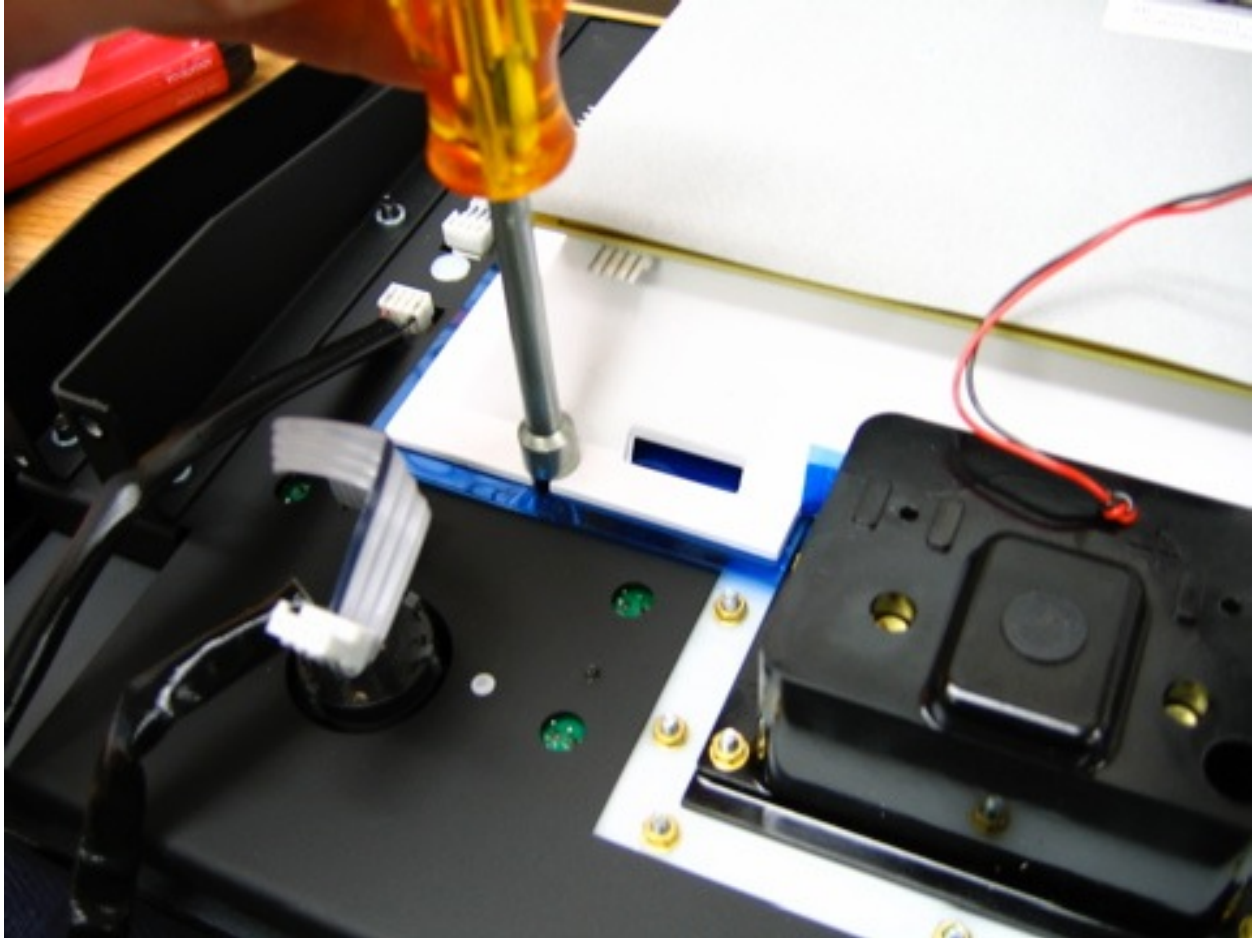


Now remove the 4 hex nuts holding the white meter housing to the black metal meter frame using 1/4" nut driver.

**Photo9**



## Photo10

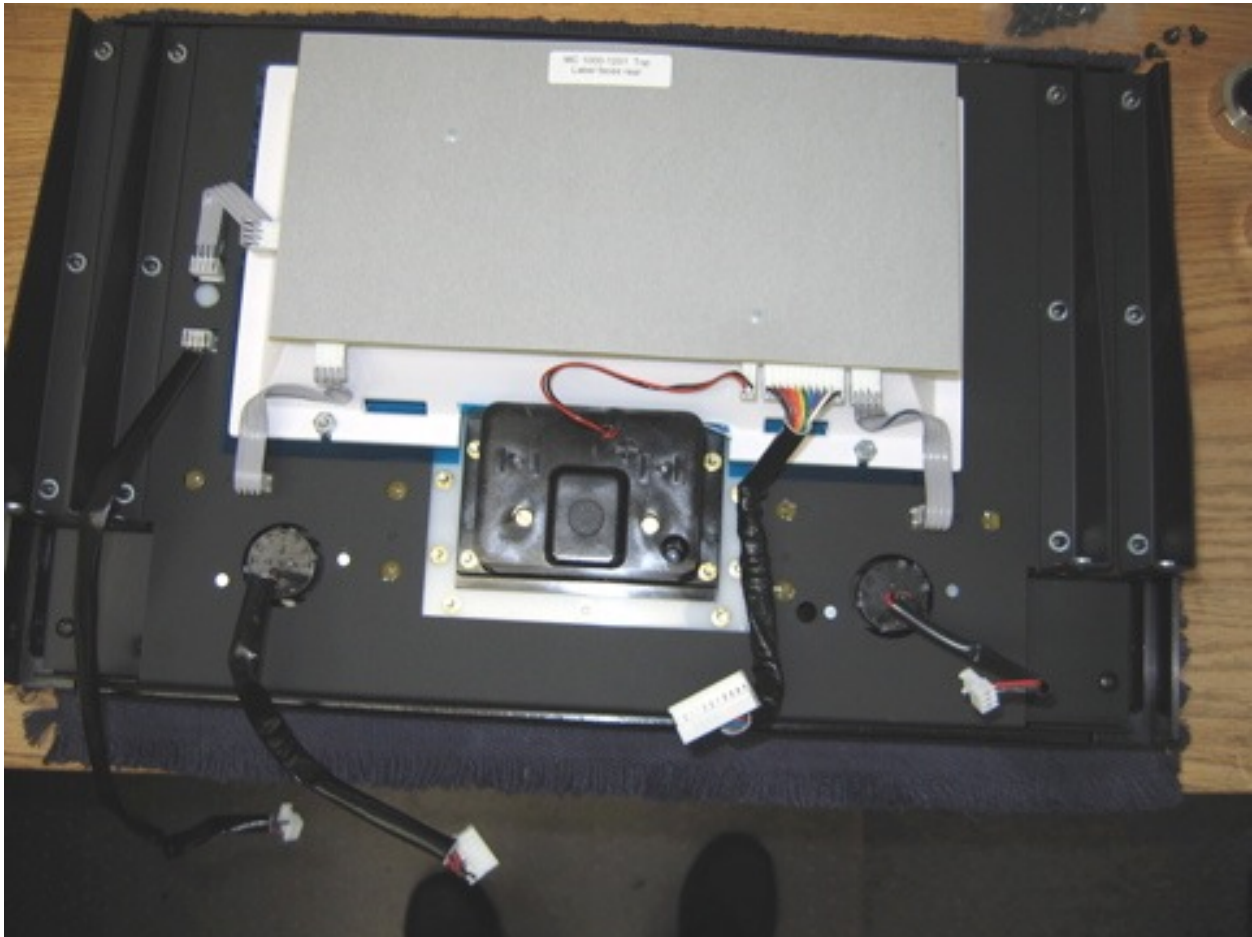


Carefully lift the housing and remove the 2 blue film papers. Replace the film papers with the 1 blue & 1 green supplied in the kit. Discard the white protective paper from our kit.

Re-Install the meter shroud securely using the 4 hex nuts.  
Install the large LED board (included in kit) noting top positioning (labeled) and connect the 3 gray ribbons along with the 2 colored connectors.



## Photo11

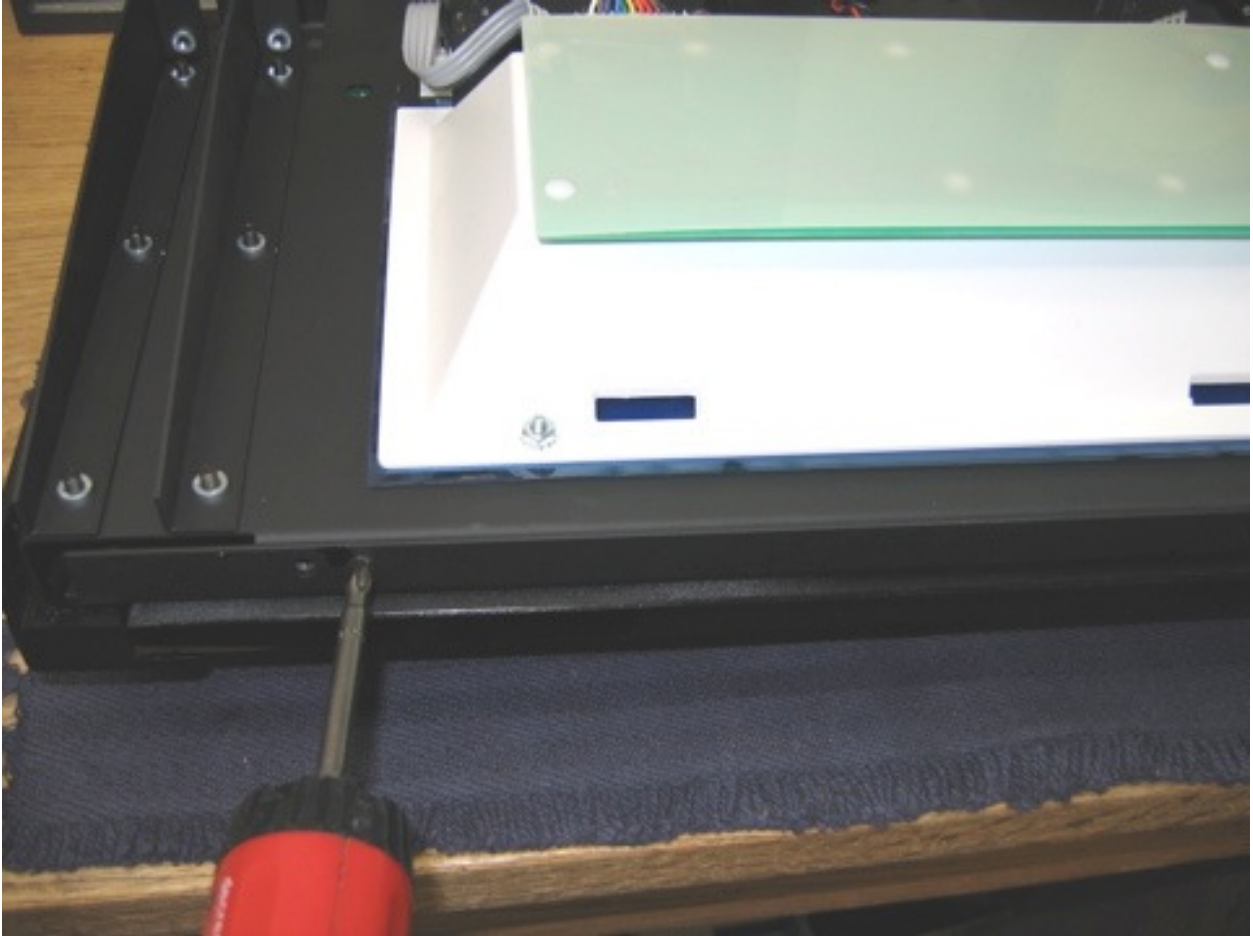


**This completes Meter illumination.**

## **Step 2 - Nomenclature Illumination**

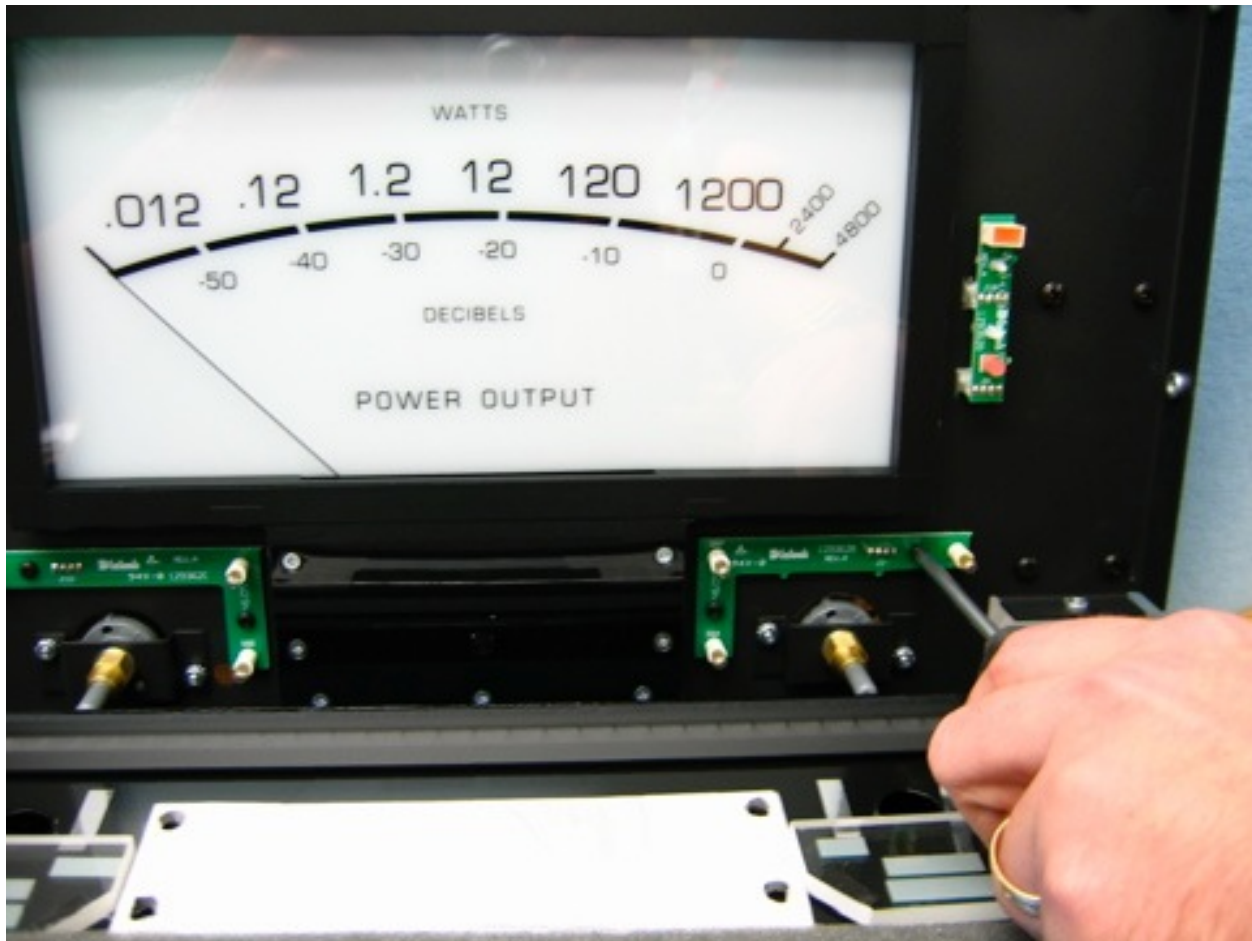
On the top portion of the front panel there are 3 black philip's flat head recessed screws that attach the meter frame to the glass frame. Remove them, and the meter and its frame can be pulled away from the glass panel.

**Photo12**



Turn this over so the meter front is exposed and locate the L shaped boards with the factory bulbs attached.

**Photo13**



Disconnect the Gray wire connectors from the rear, remove the philip's screws holding the L boards in place.

Replace the factory supplied L boards with the L boards supplied in the kit being careful not to loose the small black fiber washers.

**Photo14**



Re-install the LED L boards using the small black fiber washers between the metal mount and the board.



## Photo15



Now connect the gray cables to the L boards and mount the meter & frame back to the front panel using the 3 flat head countersunk philip's screws.

Replace the black meter shroud using the 6 screws.

Reinstall the front panel to the amplifier taking note of the positioning of the 4 wire harnesses.

Connect the 4 wire harnesses to there original locations on the PC board. Make sure you put the 10 total (5 each side) black screws back attaching the panel to the stainless chassis and the remaining 2 screws that hold the dust cover.

**This completes Nomenclature Illumination.**

Reinstall the bottom panel and pat yourself on the back.

enjoy the music!

If you incur any problems during this procedure, call our LED department at 1-800-321-2834